

Sample Suver Haze  
Strain

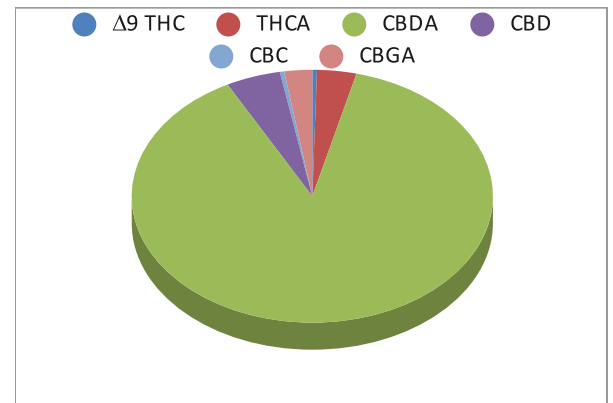
<b>0.10%</b> Δ9 THC	<b>19.39%</b> Total CBD	<b>23.31%</b> Total Cannabinoids
<b>Not tested</b> Water Activity	<b>Pass</b> 8.7 Moisture	<b>233.1</b> mg / g Total Cannabinoids



Sample ID **21111730752**  
Matrix Flower  
Metric  
Harvest/Prod Date  
Report Created 11/19/2021 Results Valid Until 11/19/2022


Sample Extracted 11/18/2021 16:30 Sample Analyzed 11/19/2021 10:40

Cannabinoids	%Weight	mg/ gram	LOQ(% /w)
<b>Δ9 THC</b>	<b>0.10</b>	1.0	0.05
THCA	0.82	8.2	0.05
Total THC (THCA*0.877)+9THC	0.82	8.2	0.05
CBDA	20.58	205.8	0.05
CBD	1.14	11.4	0.05
CBN	0.00	0.0	0.05
‡ Δ8 THC	0.00	0.0	0.05
‡ CBC	0.09	0.9	0.05
‡ CBGA	0.58	5.8	0.05
‡ CBG	0.00	0.0	0.05
‡ CBDV	0.00	0.0	0.05
‡ CBDVA	0.00	0.0	0.05
‡ THCVA	0.00	0.0	0.05



Total THC and Total CBD are calculated values per OAR 333-064-0100. Cannabinoid values for plant matter samples are reported on a dry weight basis. Water activity action level is 0.65Aw. LOQ= Limit of Quantitation. NR=Not Reported 0.00 = Not Detected above LOQ

Rogue Research Lab LLC  
218 E. Main Street, Rogue River, OR 97537  
Tel. 541-582-1962  
ORELAP 4107 OLCC 101050708B  
rogue-research-lab.com

  
Craig Berry - Lab Director  
11/19/21

Results pertain to submitted samples only. Rogue Research Lab LLC makes no claims as to the consumer safety or other risks associated with any detected or non-detected amounts of any pesticides, solvents or other adulterants. This report shall not be reproduced, unless in its entirety, without written approval from Rogue Research Lab LLC. Samples were received in good condition and all QC samples met acceptance criteria of the method; data available upon request. Analytes accompanied by dagger (‡) are not within the scope of accreditation and are for informational purposes only.