



Pre Roll Blend Shake 7.22.21

Sample ID: G1G0400-01 Matrix: Industrial Hemp

Test ID: 5016260

Source ID:

Date Sampled: 07/26/21 Date Accepted: 07/26/21

Harvest/Prod. Date: 07.22.2021

Results at a Glance

Total THC : 0.3672 %

Total CBD : 11.61 %

Total CBG : 0.4226 %

Pesticides : PASS

METALS : PASS



ISO 17025
ACCREDITED
LABORATORY

Eric Wendt
Chief Science Officer - 8/2/2021

These results relate only to the sample included on this report. The report may not be reproduced except in full, without the written permission of Green Leaf Lab.

This is for informational testing and is not compliance testing. Lab results apply to the sample as received.



Pre Roll Blend Shake 7.22.21

Sample ID: G1G0400-01 Matrix: Industrial Hemp

Test ID: 5016260

Source ID:

Date Sampled: 07/26/21 Date Accepted: 07/26/21

Harvest/Prod. Date: 07.22.2021

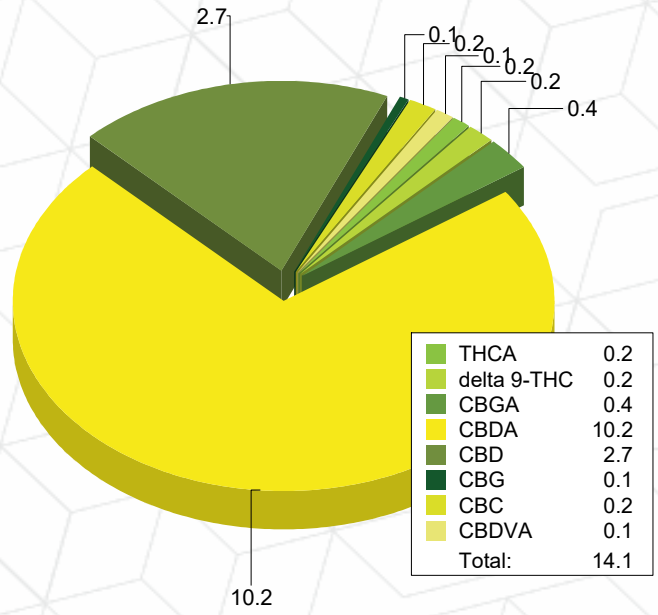
Potency Analysis

Date/Time Extracted: 07/27/21 09:11

Analysis Method/SOP: 215

Batch Identification: 2131013

Cannabinoids	LOQ (%)	% by Wt.	mg/g	Cannabinoids Profile
Total THC	0.009080	0.3672	3.672	
Total CBD	0.008300	11.61	116.1	
Total CBG	7.900E-4	0.4226	4.226	
THCA	0.002920	0.1601	1.601	
delta 9-THC	0.009080	0.2268	2.268	
delta 8-THC	0.004490	< LOQ	< LOQ	
THCV	0.005055	< LOQ	< LOQ	
THCVA	0.001885	< LOQ	< LOQ	
CBD	0.006220	2.661	26.61	
CBDA	0.008300	10.21	102.1	
CBDV	0.005000	< LOQ	< LOQ	
CBDVA	0.001640	0.1451	1.451	
CBN	0.002990	< LOQ	< LOQ	
CBG	7.900E-4	0.08103	0.8103	
CBGA	7.900E-4	0.3890	3.89	
CBC	0.008965	0.2436	2.436	



Total THC = delta 9-THC + (THCA * 0.877)

Total CBD = CBD + (CBDA * 0.877)

Total CBG = CBG + (CBGA * 0.878)

LOQ=Limit of Quantification, the lowest measurable concentration of an analyte.



ISO 17025
ACCREDITED
LABORATORY

Eric Wendt
Chief Science Officer - 8/2/2021

These results relate only to the sample included on this report. The report may not be reproduced except in full, without the written permission of Green Leaf Lab.

This is for informational testing and is not compliance testing. Lab results apply to the sample as received.



Pre Roll Blend Shake 7.22.21

Sample ID: G1G0400-01 Matrix: Industrial Hemp

Test ID: 5016260

Source ID:

Date Sampled: 07/26/21 Date Accepted: 07/26/21

Harvest/Prod. Date: 07.22.2021

Pesticide Analysis in ppm

Date/Time Extracted: 07/27/21 09:46

Analysis Method/SOP: 203

Analyte	Result	Action Level	LOD	LOQ	Units	Notes	Analyte	Result	Action Level	LOD	LOQ	Units	Notes
Abamectin	< LOQ	0.5		0.04	ppm		Acephate	< LOQ	0.4		0.04	ppm	
Acequinocyl	< LOQ	2		0.04	ppm		Acetamiprid	< LOQ	0.2		0.04	ppm	
Aldicarb	< LOQ	0.4		0.04	ppm		Azoxystrobin	< LOQ	0.2		0.04	ppm	
Bifenazate	< LOQ	0.2		0.04	ppm		Bifenthrin	< LOQ	0.2		0.04	ppm	
Boscalid	< LOQ	0.4		0.04	ppm		Carbaryl	< LOQ	0.2		0.04	ppm	
Carbofuran	< LOQ	0.2		0.04	ppm		Chlorantraniliprole	< LOQ	0.2		0.04	ppm	
Chlorfenapyr	< LOQ	1		0.04	ppm		Chlorpyrifos	< LOQ	0.2		0.04	ppm	
Clofentezine	< LOQ	0.2		0.04	ppm		Cyfluthrin	< LOQ	1		0.04	ppm	
Cypermethrin	< LOQ	1		0.04	ppm		Daminozide	< LOQ	1		0.04	ppm	
DDVP (Dichlorvos)	< LOQ	1		0.04	ppm		Diazinon	< LOQ	0.2		0.04	ppm	
Dimethoate	< LOQ	0.2		0.04	ppm		Ethoprophos	< LOQ	0.2		0.04	ppm	
Etofenprox	< LOQ	0.4		0.04	ppm		Etoazole	< LOQ	0.2		0.04	ppm	
Fenoxycarb	< LOQ	0.2		0.04	ppm		Fenpyroximate	< LOQ	0.4		0.04	ppm	
Fipronil	< LOQ	0.4		0.04	ppm		Fonicamid	< LOQ	1		0.04	ppm	
Fludioxonil	< LOQ	0.4		0.04	ppm		Hexythiazox	< LOQ	1		0.04	ppm	
Imazalil	< LOQ	0.2		0.04	ppm		Imidacloprid	< LOQ	0.4		0.04	ppm	
Kresoxim-methyl	< LOQ	0.4		0.04	ppm		Malathion	< LOQ	0.2		0.04	ppm	
Metalaxyl	< LOQ	0.2		0.04	ppm		Methiocarb	< LOQ	0.2		0.04	ppm	
Methomyl	< LOQ	0.4		0.04	ppm		Methyl parathion	< LOQ	0.2		0.04	ppm	
MGK-264	< LOQ	0.2		0.04	ppm		Myclobutanil	< LOQ	0.2		0.04	ppm	
Naled	< LOQ	0.5		0.04	ppm		Oxamyl	< LOQ	1		0.04	ppm	
Paclobutrazol	< LOQ	0.4		0.04	ppm		Permethrins	< LOQ	0.2		0.04	ppm	
Phosmet	< LOQ	0.2		0.04	ppm		Piperonyl butoxide	< LOQ	2		0.1	ppm	
Prallethrin	< LOQ	0.2		0.04	ppm		Propiconazole	< LOQ	0.4		0.04	ppm	
Propoxur	< LOQ	0.2		0.04	ppm		Pyrethrins	< LOQ	1		0.1	ppm	
Pyridaben	< LOQ	0.2		0.04	ppm		Spinosad	< LOQ	0.2		0.04	ppm	
Spiromesifen	< LOQ	0.2		0.04	ppm		Spirotetramat	< LOQ	0.2		0.04	ppm	
Spiroxamine	< LOQ	0.4		0.04	ppm		Tebuconazole	< LOQ	0.4		0.04	ppm	
Thiacloprid	< LOQ	0.2		0.04	ppm		Thiamethoxam	< LOQ	0.2		0.04	ppm	
Trifloxystrobin	< LOQ	0.2		0.04	ppm								

ND - Compound not detected

Results above the Action Level fail state testing requirements and will be highlighted **Red**.



ISO 17025
ACCREDITED
LABORATORY

Eric Wendt
Chief Science Officer - 8/2/2021

These results relate only to the sample included on this report. The report may not be reproduced except in full, without the written permission of Green Leaf Lab.

This is for informational testing and is not compliance testing. Lab results apply to the sample as received.



Pre Roll Blend Shake 7.22.21

Sample ID: G1G0400-01 Matrix: Industrial Hemp

Test ID: 5016260

Source ID:

Date Sampled: 07/26/21 Date Accepted: 07/26/21

Harvest/Prod. Date: 07.22.2021

Metals Analysis by ICPMS

Date/Time Extracted: 07/28/21 10:32

Analysis Method/SOP: HM-001

Analyte	Result	LOD	LOQ	Units
Arsenic	0.166	0.0110	0.0500	ug/g
Cadmium	0.167	0.00100	0.0500	ug/g
Lead	0.309	0.00150	0.0500	ug/g
Mercury	< LOQ	0.00350	0.0100	ug/g

Metal analyses are not accredited to ORELAP TNI 2009 Quality Standards.
<LOQ - Results below the Limit of Quantitation - Compound not detected

Analysis Subcontracted to Green Leaf Labs - SCCA.



ISO 17025
ACCREDITED
LABORATORY

Eric Wendt
Chief Science Officer - 8/2/2021

These results relate only to the sample included on this report. The report may not be reproduced except in full, without the written permission of Green Leaf Lab.

This is for informational testing and is not compliance testing. Lab results apply to the sample as received.



Quality Control Potency

Batch: 2131013 - 215-Hemp

Blank(2131013-BLK1)							
Analyte	Result	LOQ	Units	%Recovery Limits	Extracted	Analyzed	Notes
THCA	< LOQ	0.01168	%		07/27/21 09:11	07/28/21 12:34	
delta 9-THC	< LOQ	0.03632	%		07/27/21 09:11	07/28/21 12:34	
delta 8-THC	< LOQ	0.01796	%		07/27/21 09:11	07/28/21 12:34	
THCV	< LOQ	0.02022	%		07/27/21 09:11	07/28/21 12:34	
THCVA	< LOQ	0.007540	%		07/27/21 09:11	07/28/21 12:34	
CBD	< LOQ	0.006220	%		07/27/21 09:11	07/28/21 12:34	
CBDA	< LOQ	0.008300	%		07/27/21 09:11	07/28/21 12:34	
CBDV	< LOQ	0.02000	%		07/27/21 09:11	07/28/21 12:34	
CBDVA	< LOQ	0.006560	%		07/27/21 09:11	07/28/21 12:34	
CBN	< LOQ	0.01196	%		07/27/21 09:11	07/28/21 12:34	
CBG	< LOQ	0.003160	%		07/27/21 09:11	07/28/21 12:34	
CBGA	< LOQ	0.003160	%		07/27/21 09:11	07/28/21 12:34	
CBC	< LOQ	0.03586	%		07/27/21 09:11	07/28/21 12:34	

Reference(2131013-SRM1)							
Analyte	% Recovery	LOQ	Units	%Recovery Limits	Extracted	Analyzed	Notes
THCA	102	0.002920	%	80-120	07/27/21 09:11	07/28/21 12:57	
delta 9-THC	99.1	0.009080	%	80-120	07/27/21 09:11	07/28/21 12:57	
CBD	104	0.001555	%	80-120	07/27/21 09:11	07/28/21 12:57	
CBDA	104	0.002075	%	80-120	07/27/21 09:11	07/28/21 12:57	

Pesticide Analysis

Batch: 2131014 - 203

Blank(2131014-BLK1)							
Analyte	Result	LOQ	Units	%Recovery Limits	Extracted	Analyzed	Notes
Abamectin	< LOQ	0.04	ppm		07/27/21 09:46	07/27/21 22:12	
DDVP (Dichlorvos)	< LOQ	0.04	ppm		07/27/21 09:46	07/27/21 22:12	
Acephate	< LOQ	0.04	ppm		07/27/21 09:46	07/27/21 22:12	
Acequinocyl	< LOQ	0.04	ppm		07/27/21 09:46	07/27/21 22:12	
Acetamiprid	< LOQ	0.04	ppm		07/27/21 09:46	07/27/21 22:12	
Aldicarb	< LOQ	0.04	ppm		07/27/21 09:46	07/27/21 22:12	
Azoxystrobin	< LOQ	0.04	ppm		07/27/21 09:46	07/27/21 22:12	
Bifenazate	< LOQ	0.04	ppm		07/27/21 09:46	07/27/21 22:12	
Bifenthrin	< LOQ	0.04	ppm		07/27/21 09:46	07/27/21 22:12	
Boscalid	< LOQ	0.04	ppm		07/27/21 09:46	07/27/21 14:46	
Carbaryl	< LOQ	0.04	ppm		07/27/21 09:46	07/27/21 22:12	
Carbofuran	< LOQ	0.04	ppm		07/27/21 09:46	07/27/21 22:12	
Chlorantraniliprole	< LOQ	0.04	ppm		07/27/21 09:46	07/27/21 22:12	
Chlorfenapyr	< LOQ	0.04	ppm		07/27/21 09:46	07/27/21 14:46	



Eric Wendt
Chief Science Officer - 8/2/2021

These results relate only to the sample included on this report. The report may not be reproduced except in full, without the written permission of Green Leaf Lab.

This is for informational testing and is not compliance testing. Lab results apply to the sample as received.



Quality Control Pesticide Analysis (Continued)

Batch: 2131014 - 203 (Continued)

Blank(2131014-BLK1)							
Analyte	Result	LOQ	Units	%Recovery Limits	Extracted	Analyzed	Notes
Chlorpyrifos	< LOQ	0.04	ppm		07/27/21 09:46	07/27/21 22:12	
Clofentezine	< LOQ	0.04	ppm		07/27/21 09:46	07/27/21 22:12	
Cyfluthrin	< LOQ	0.04	ppm		07/27/21 09:46	07/27/21 14:46	
Cypermethrin	< LOQ	0.04	ppm		07/27/21 09:46	07/27/21 14:46	
Daminozide	< LOQ	0.04	ppm		07/27/21 09:46	07/27/21 22:12	
Diazinon	< LOQ	0.04	ppm		07/27/21 09:46	07/27/21 22:12	
Dimethoate	< LOQ	0.04	ppm		07/27/21 09:46	07/27/21 22:12	
Ethoprophos	< LOQ	0.04	ppm		07/27/21 09:46	07/27/21 22:12	
Etofenprox	< LOQ	0.04	ppm		07/27/21 09:46	07/27/21 22:12	
Etoxazole	< LOQ	0.04	ppm		07/27/21 09:46	07/27/21 22:12	
Fenoxycarb	< LOQ	0.04	ppm		07/27/21 09:46	07/27/21 22:12	
Fenpyroximate	< LOQ	0.04	ppm		07/27/21 09:46	07/27/21 22:12	
Fipronil	< LOQ	0.04	ppm		07/27/21 09:46	07/27/21 14:46	
Fonicamid	< LOQ	0.04	ppm		07/27/21 09:46	07/27/21 22:12	
Fludioxonil	< LOQ	0.04	ppm		07/27/21 09:46	07/27/21 14:46	
Hexythiazox	< LOQ	0.04	ppm		07/27/21 09:46	07/27/21 22:12	
Imazalil	< LOQ	0.04	ppm		07/27/21 09:46	07/27/21 22:12	
Imidacloprid	< LOQ	0.04	ppm		07/27/21 09:46	07/27/21 22:12	
Kresoxim-methyl	< LOQ	0.04	ppm		07/27/21 09:46	07/27/21 14:46	
Metalaxyl	< LOQ	0.04	ppm		07/27/21 09:46	07/27/21 22:12	
Malathion	< LOQ	0.04	ppm		07/27/21 09:46	07/27/21 14:46	
Methiocarb	< LOQ	0.04	ppm		07/27/21 09:46	07/27/21 22:12	
Methomyl	< LOQ	0.04	ppm		07/27/21 09:46	07/27/21 22:12	
Myclobutanil	< LOQ	0.04	ppm		07/27/21 09:46	07/27/21 22:12	
Methyl parathion	< LOQ	0.04	ppm		07/27/21 09:46	07/27/21 14:46	
Naled	< LOQ	0.04	ppm		07/27/21 09:46	07/27/21 22:12	
MGK-264	< LOQ	0.04	ppm		07/27/21 09:46	07/27/21 14:46	
Oxamyl	< LOQ	0.04	ppm		07/27/21 09:46	07/27/21 22:12	
Paclobutrazol	< LOQ	0.04	ppm		07/27/21 09:46	07/27/21 22:12	
Phosmet	< LOQ	0.04	ppm		07/27/21 09:46	07/27/21 22:12	
Permethrins	< LOQ	0.04	ppm		07/27/21 09:46	07/27/21 14:46	
Piperonyl butoxide	< LOQ	0.1	ppm		07/27/21 09:46	07/27/21 22:12	
Prallethrin	< LOQ	0.04	ppm		07/27/21 09:46	07/27/21 22:12	
Propiconazole	< LOQ	0.04	ppm		07/27/21 09:46	07/27/21 14:46	
Propoxur	< LOQ	0.04	ppm		07/27/21 09:46	07/27/21 22:12	
Pyrethrins	< LOQ	0.1	ppm		07/27/21 09:46	07/27/21 22:12	
Pyridaben	< LOQ	0.04	ppm		07/27/21 09:46	07/27/21 22:12	
Spinosad	< LOQ	0.04	ppm		07/27/21 09:46	07/27/21 22:12	



Eric Wendt
Chief Science Officer - 8/2/2021

These results relate only to the sample included on this report. The report may not be reproduced except in full, without the written permission of Green Leaf Lab.

This is for informational testing and is not compliance testing. Lab results apply to the sample as received.



Quality Control Pesticide Analysis (Continued)

Batch: 2131014 - 203 (Continued)

Blank(2131014-BLK1)							
Analyte	Result	LOQ	Units	%Recovery Limits	Extracted	Analyzed	Notes
Spiromesifen	< LOQ	0.04	ppm		07/27/21 09:46	07/27/21 22:12	
Spirotetramat	< LOQ	0.04	ppm		07/27/21 09:46	07/27/21 22:12	
Spiroxamine	< LOQ	0.04	ppm		07/27/21 09:46	07/27/21 22:12	
Tebuconazole	< LOQ	0.04	ppm		07/27/21 09:46	07/27/21 22:12	
Thiacloprid	< LOQ	0.04	ppm		07/27/21 09:46	07/27/21 22:12	
Thiamethoxam	< LOQ	0.04	ppm		07/27/21 09:46	07/27/21 22:12	
Trifloxystrobin	< LOQ	0.04	ppm		07/27/21 09:46	07/27/21 22:12	

LCS(2131014-BS1)							
Analyte	% Recovery	LOQ	Units	%Recovery Limits	Extracted	Analyzed	Notes
Abamectin	96.5	0.04	ppm	70-130	07/27/21 09:46	07/27/21 22:35	
DDVP (Dichlorvos)	118	0.04	ppm	70-130	07/27/21 09:46	07/27/21 22:35	
Acephate	115	0.04	ppm	70-130	07/27/21 09:46	07/27/21 22:35	
Acequinocyl	91.9	0.04	ppm	52-97	07/27/21 09:46	07/27/21 22:35	
Acetamiprid	123	0.04	ppm	70-130	07/27/21 09:46	07/27/21 22:35	
Aldicarb	116	0.04	ppm	70-130	07/27/21 09:46	07/27/21 22:35	
Azoxystrobin	115	0.04	ppm	70-130	07/27/21 09:46	07/27/21 22:35	
Bifenazate	117	0.04	ppm	70-130	07/27/21 09:46	07/27/21 22:35	
Bifenthrin	108	0.04	ppm	70-130	07/27/21 09:46	07/27/21 22:35	
Boscalid	107	0.04	ppm	70-130	07/27/21 09:46	07/27/21 15:08	
Carbaryl	120	0.04	ppm	70-130	07/27/21 09:46	07/27/21 22:35	
Carbofuran	114	0.04	ppm	70-130	07/27/21 09:46	07/27/21 22:35	
Chlorantraniliprole	91.6	0.04	ppm	26.2-145	07/27/21 09:46	07/27/21 22:35	
Chlorfenapyr	108	0.04	ppm	71-140	07/27/21 09:46	07/27/21 15:08	
Chlorpyrifos	108	0.04	ppm	70-130	07/27/21 09:46	07/27/21 22:35	
Clofentezine	101	0.04	ppm	14.4-62.3	07/27/21 09:46	07/27/21 22:35	BSH
Cyfluthrin	106	0.04	ppm	70-130	07/27/21 09:46	07/27/21 15:08	
Cypermethrin	99.9	0.04	ppm	70-130	07/27/21 09:46	07/27/21 15:08	
Daminozide	687	0.04	ppm	11-74.6	07/27/21 09:46	07/27/21 22:35	BSH
Diazinon	110	0.04	ppm	70-130	07/27/21 09:46	07/27/21 22:35	
Dimethoate	114	0.04	ppm	70-130	07/27/21 09:46	07/27/21 22:35	
Ethoprophos	110	0.04	ppm	70-130	07/27/21 09:46	07/27/21 22:35	
Etofenprox	106	0.04	ppm	70-130	07/27/21 09:46	07/27/21 22:35	
Etoxazole	105	0.04	ppm	70-130	07/27/21 09:46	07/27/21 22:35	
Fenoxycarb	102	0.04	ppm	70-130	07/27/21 09:46	07/27/21 22:35	
Fenpyroximate	95.1	0.04	ppm	50-100	07/27/21 09:46	07/27/21 22:35	
Fipronil	111	0.04	ppm	70-130	07/27/21 09:46	07/27/21 15:08	
Flonicamid	125	0.04	ppm	70-130	07/27/21 09:46	07/27/21 22:35	
Fludioxonil	89.6	0.04	ppm	70-130	07/27/21 09:46	07/27/21 15:08	



Eric Wendt
Chief Science Officer - 8/2/2021

These results relate only to the sample included on this report. The report may not be reproduced except in full, without the written permission of Green Leaf Lab.

This is for informational testing and is not compliance testing. Lab results apply to the sample as received.



Quality Control Pesticide Analysis (Continued)

Batch: 2131014 - 203 (Continued)

LCS(2131014-BS1)							
Analyte	% Recovery	LOQ	Units	%Recovery Limits	Extracted	Analyzed	Notes
Hexythiazox	114	0.04	ppm	66-116	07/27/21 09:46	07/27/21 22:35	
Imazalil	109	0.04	ppm	58-96.4	07/27/21 09:46	07/27/21 22:35	BSH
Imidacloprid	130	0.04	ppm	70-130	07/27/21 09:46	07/27/21 22:35	
Kresoxim-methyl	110	0.04	ppm	70-130	07/27/21 09:46	07/27/21 15:08	
Metalaxyl	116	0.04	ppm	70-130	07/27/21 09:46	07/27/21 22:35	
Malathion	105	0.04	ppm	70-130	07/27/21 09:46	07/27/21 15:08	
Methiocarb	121	0.04	ppm	70-130	07/27/21 09:46	07/27/21 22:35	
Methomyl	115	0.04	ppm	70-130	07/27/21 09:46	07/27/21 22:35	
Myclobutanil	107	0.04	ppm	70-130	07/27/21 09:46	07/27/21 22:35	
Methyl parathion	104	0.04	ppm	61-124	07/27/21 09:46	07/27/21 15:08	
Naled	110	0.04	ppm	36-93	07/27/21 09:46	07/27/21 22:35	BSH
MGK-264	115	0.04	ppm	70-130	07/27/21 09:46	07/27/21 15:08	
Oxamyl	112	0.04	ppm	70-130	07/27/21 09:46	07/27/21 22:35	
Paclobutrazol	107	0.04	ppm	70-130	07/27/21 09:46	07/27/21 22:35	
Phosmet	117	0.04	ppm	70-130	07/27/21 09:46	07/27/21 22:35	
Permethrins	111	0.04	ppm	70-130	07/27/21 09:46	07/27/21 15:08	
Piperonyl butoxide	88.3	0.1	ppm	57-134	07/27/21 09:46	07/27/21 22:35	
Prallethrin	99.1	0.04	ppm	70-130	07/27/21 09:46	07/27/21 22:35	
Propiconazole	108	0.04	ppm	67-119	07/27/21 09:46	07/27/21 15:08	
Propoxur	114	0.04	ppm	70-130	07/27/21 09:46	07/27/21 22:35	
Pyrethrins	59.5	0.1	ppm	57-109	07/27/21 09:46	07/27/21 22:35	
Pyridaben	120	0.04	ppm	70-130	07/27/21 09:46	07/27/21 22:35	
Spinosad	104	0.04	ppm	70-130	07/27/21 09:46	07/27/21 22:35	
Spiromesifen	113	0.04	ppm	70-130	07/27/21 09:46	07/27/21 22:35	
Spirotetramat	102	0.04	ppm	70-130	07/27/21 09:46	07/27/21 22:35	
Spiroxamine	109	0.04	ppm	72-153	07/27/21 09:46	07/27/21 22:35	
Tebuconazole	110	0.04	ppm	70-130	07/27/21 09:46	07/27/21 22:35	
Thiacloprid	122	0.04	ppm	70-130	07/27/21 09:46	07/27/21 22:35	
Thiamethoxam	124	0.04	ppm	70-130	07/27/21 09:46	07/27/21 22:35	
Trifloxystrobin	114	0.04	ppm	70-130	07/27/21 09:46	07/27/21 22:35	



Eric Wendt
Chief Science Officer - 8/2/2021

These results relate only to the sample included on this report. The report may not be reproduced except in full, without the written permission of Green Leaf Lab.

This is for informational testing and is not compliance testing. Lab results apply to the sample as received.



Quality Control Metals Analysis

Batch: 2131049 - Metals

Blank(2131049-BLK1)							
Analyte	Result	LOQ	Units	%Recovery Limits	Extracted	Analyzed	Notes
Cadmium	< LOQ	0.0500	ug/g		07/28/21 10:32	07/28/21 13:08	
Lead	< LOQ	0.0500	ug/g		07/28/21 10:32	07/28/21 13:08	
Arsenic	< LOQ	0.0500	ug/g		07/28/21 10:32	07/28/21 13:08	
Mercury	< LOQ	0.0100	ug/g		07/28/21 10:32	07/28/21 13:08	

LCS(2131049-BS1)							
Analyte	% Recovery	LOQ	Units	%Recovery Limits	Extracted	Analyzed	Notes
Cadmium	90.8	0.0500	ug/g	70-130	07/28/21 10:32	07/28/21 13:10	
Lead	84.4	0.0500	ug/g	70-130	07/28/21 10:32	07/28/21 13:10	
Arsenic	96.2	0.0500	ug/g	70-130	07/28/21 10:32	07/28/21 13:10	
Mercury	89.3	0.0100	ug/g	70-130	07/28/21 10:32	07/28/21 13:10	



Eric Wendt
Chief Science Officer - 8/2/2021

These results relate only to the sample included on this report. The report may not be reproduced except in full, without the written permission of Green Leaf Lab.

This is for informational testing and is not compliance testing. Lab results apply to the sample as received.



Notes and Definitions

- ATM Non-cannabis matrix related interference or suppression of Internal standard
- BLI Baseline Interference - Cannabinoid peak interference in chromatographic baseline affecting QC recovery .
- BLK Analyte detected in method blank, but not associated samples.
- BSH Blank Spike High - Blank Spike recovery above method limit. no detections in samples.
- BSL Blank Spike Low - Blank Spike recovery below lower method limit, analyte chromatography reviewed manually for all samples.
- C Interference due to co-elution
- CBD Interference due to co-elution
- CV1 CBD matrix interference on GC Pest chromatography
- CV2 CCV was above acceptance criteria, Non-detect samples are considered acceptable.
- INF CCV was below acceptance criteria, sample still exceeds regulatory limit.
- ISH One or more QC falls outside acceptance criteria. Data entered into LIMS for informational purposes only.
- ISL Internal Standard concentration is above acceptance criteria.
- MSH Internal Standard concentration is below acceptance criteria.
- MSI Matrix Spike High - Matrix Spike recovery above method limits.
- MSL Matrix Spike Interference - Matrix spike source sample contains analyte hit above calibration affecting recovery accuracy in Matrix Spike.
- TPP
- U Matrix Spike Low - Matrix Spike recovery below lower method limit, analyte chromatography reviewed manually for all samples.
Internal Standard concentration outside control limit due to matrix interference



Eric Wendt
Chief Science Officer - 8/2/2021

These results relate only to the sample included on this report. The report may not be reproduced except in full, without the written permission of Green Leaf Lab.

This is for informational testing and is not compliance testing. Lab results apply to the sample as received.